

July 2024

Newsletter



New Nikon Z6III • Profoto's e-commerce Solutions

New Canon and Nikon Digital Camera Kits in Rentals

The Leica M6 Camera • What's Your Favourite

Looking Camera? • Summer Analogue Workshops

New Camera Bags from Tenba - On Sale!

BEAU
PHOTO

Beau Photo Supplies • 1401 W. 8th Ave

Vancouver, BC • 604.734.7771

www.beauphoto.com

 **Beau Photo**

 **beauphotostore**

Digital Mike M.

NEW! Nikon Z6 III (\$3,399)

The **Z6 III** represents a big upgrade over the Z6 II and started shipping in late June!

Even though the megapixels are the same at 24, the "partially stacked" sensor is much faster, allowing for up to 20 fps raw and 60 fps JPEG still image capture and vastly improved AF. In fact, its AF system performs close to the Z8 and Z9, and it even operates down to an incredible -10 EV. How you work with focus tracking is now more or less the same as the Z8 and Z9, meaning the Z6 III's AF will be much more suitable for use in sports and wildlife photography. Video features and quality are massively upgraded, as is the resolution of the EVF and the articulation of the rear LCD. In short, many flagship features in a mid-range body - nice!



Select Rebates

Canon EOS R5 Body - \$3,999

Reg. \$4,599



**Canon RF 135mm
f/1.8L IS - \$2,699**

Reg. \$2,849



**GF 45-100mm f/4 R
LM OIS WR - \$2,425**

Reg. \$3,100



GF 100-200mm f/5.6 R LM OIS WR - \$2,025

Reg. \$2,700

Find the complete list [on our website.](#)

FUJIFILM
X | GFX

SAMPLE OFFER
FUJIFILM GF20-35mmF4 R WR LENS
SAVE: 500
WAS: \$3,200
NOW: \$2,700



More Than Full Frame™

Save up to \$680

on Select FUJINON GF Lenses

April 15 - July 21, 2024

Photo © 2023 Hendrik Osula

FUJIFILM GFX100 II Camera Body sold separately and not subject to this promotion



BEAU
PHOTO

For more information visit
www.fujifilm-x.com/en-ca/promotions
Or scan the QR Code Above.

Select FUJINON GF lens products savings

APPLICABLE GF LENS PRODUCTS

GF32-64mmF4 R LM WR

GF20-35mmF4 R WR

GF110mmF2 R LM WR

GF80mmF1.7 R WR

GF45-100mm F4 R LM OIS WR

GF100-200mmF5.6 R LM OIS WR

MSRP

Price to Consumer
After Instant
Savings

Consumer
Savings

\$3100.00

\$2425.00

\$675

\$3200.00

\$2700.00

\$500

\$3780.00

\$3100.00

\$680

\$2990.00

\$2425.00

\$565

\$3100.00

\$2425.00

\$675

\$2700.00

\$2025.00

\$675

Pro Sales

Ken S.

Profoto has now entered into to the world of e-commerce solutions



To those who's work is focused on e-commerce photography and companies who need to bring their products to market fast and efficiently, this is great news. Now companies who sell everything from clothes, shoes, and purses to bike parts and tools have a partner that they can trust, who has years of experience in producing high quality photography products. Profoto's goal was to provide a solution for their customers in which to create pro-quality content for e-commerce and editorial that supports higher sales and keeps product return rates low. Their answer was to create a scalable e-commerce solution to cover workflow management for large and small businesses, and content creation systems for photo and video with seamless integration with post-production services to help getting their products online faster.

In March 2022 Profoto acquired Styleshoots, a company with a long and successful history in e-commerce solutions with the objective of combining both companies' expertise. Now Profoto's automated solutions StyleShoots is a hardware/software combination that allows you to quickly and easily create professional content. This

eliminates long processing times for your photos and videos, giving you immediate access to products for your web shop, catalogue, digital signage, social media or book collection. Pictures and videos of high quality are usually very expensive and often too late. Often this unnecessarily delays your "time-to-web" and "time to market". No more back and forth dragging of products to various locations. With StyleShoots, you're in control and you save valuable time and costs at the same time. Clients report tremendous time and cost savings with the use of StyleShoots



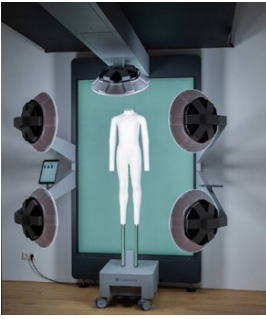
With StyleShoots:

- You can shoot more products in a minimum of time
- You give your sales a unique push with professional material
- You shorten your 'Time-to-Web' or social media
- You significantly reduce your costs for product photography
- You win new customers with high quality pictures
- You increase your sales with high quality images in your brochures

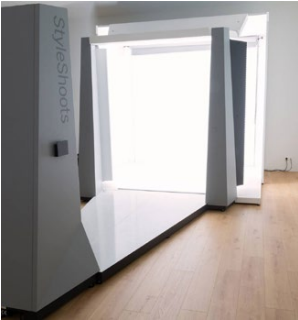
With Profoto Style shoots there are a variety of solutions for your company's photography needs.



Profoto StyleShoots Horizontal is for flat lay photography and features a table, camera, built-in computer, software and a professional lighting system. The systems are so easy to use with the included iPad, the user needs little to no experience with product photography to be able to use the machine. <https://www.beauphoto.com/product/profoto-styleshoots-horizontal/>



Profoto StyleShoots Vertical is designed for Magic Mannequin II photography and more. It has all these above-mentioned features but still has something extra in the form of the caddy. A convenient trolley on wheels that can be easily rolled in and out of the system and which is suitable for each model. Both Horizontal and Vertical automatically removes the background in a matter of seconds. <https://www.beauphoto.com/product/profoto-styleshoots-vertical/>



Profoto StyleShoots Live is for live model photography and is the only all-in-one studio on the market that combines your on-model stills and videos. It is essentially two slots (stills and video) combined in one machine. It is operated by an included iPad Pro with just one single operator. Once you're done with the shooting, your complete edited videos are exported in the right format within 5 minutes. <https://www.beauphoto.com/product/profoto-styleshoots-live/>



Profoto StyleShoots Eclipse is a fully self-contained machine for photos and videos of all your smaller items. Customizable lighting, coloured backdrops, and stylish props. Play with the camera zoom, tilt, rotation, and turntable. It's all up to you. Focus on being creative and spend almost no time in post-production. Set up your video templates and photo framings once. At the press of a button, the new Sequence feature will do everything from recording to editing. <https://www.beauphoto.com/product/profoto-eclipse-ii/>



Profoto Elevate Creative Automation combines limitless creativity with studio workflow automation. Designed to support ambitious brands in creating exceptional content, our innovative creative automation tools support faster time-to-market and higher sales while minimizing returns. <https://www.beauphoto.com/product/profoto-styleshoots-elevate/>



Profoto Workflow is built to enable streamlined collaboration throughout the entire creative process, ProStudio for Workflow supports you in creating better content with fewer resources, resulting in a faster time-to-market, higher sales, and fewer product returns. <https://www.beauphoto.com/product/profoto-prostudio/>

Rentals

Jason K.

***NEW* In Rentals - Canon & Nikon Mirrorless Cameras!**

We have just added three new Canon mirrorless camera kits and one new Nikon Z mirrorless camera kit into the Beau Photo Rental Department! The kits are below...

Canon EOS R100 with RF-S 18-45mm f4.5~f6.3 IS STM Kit - \$75/Day or Weekend

Canon EOS R10 with RF-S 18-45mm f4.5~f6.3 IS STM Kit - \$90/Day or Weekend

Canon EOS R8 with RF 24-50mm f4.5~f6.3 IS STM Kit - \$100/Day or Weekend

Nikon Z 50 with Z DX 16-50mm f3.5~f6.3 VR Kit - \$85/Day or Weekend

You can read more about them in my blog post here - <https://www.beauphoto.com/new-in-rentals-canon-nikon-mirrorless-cameras/>



Analogue Thoughts

Marley H.



The Leica M6

The Leica M6 TTL is a highly sought-after film rangefinder camera that combines the legendary Leica M6's mechanical excellence with the added benefit of through-the-lens (TTL) metering and a unique 0.85 viewfinder magnification.

The design and build of the M6 TTL has the classic Leica M6 design, with its compact, rugged, and beautifully crafted body made of brass and mostly zinc. The camera's ergonomics are superb, with a comfortable grip and intuitive controls. The addition of TTL metering has not compromised the camera's overall design, and it still feels like a traditional Leica M-series camera. The 0.85 viewfinder is a unique feature that sets this camera apart from other Leica M6 variants. The increased magnification provides a more precise and detailed view of the scene, making it ideal for critical focusing and composition. However, some users may find the increased magnification takes some getting used to. The TTL metering system is accurate and reliable, providing excellent exposure readings even in challenging lighting conditions. The metering cell is located in the viewfinder, which means you can see the exposure reading in real-time as you compose your shot. This feature is particularly useful for beginners or those who are new to film photography. The M6 TTL retains the same mechanical features as the original M6 classic, with a smooth-shutter mechanism and precise focusing. The mount is compatible with all Leica M-mount lenses, including vintage and modern options. The camera's ISO range is 25-6400, making it suitable for a wide range of film types and applications.

If you're looking for a high-quality film rangefinder camera that combines traditional mechanics with modern features, the Leica M6 TTL is an excellent choice. It's ideal for photographers who value precision, simplicity, and creative control over their images.

I absolutely love using my Leica M6, It just feels right in my hands. The rangefinder patch is so bright that I can even focus at night with ease. The light meter is very accurate, which makes it perfect for colour reversal film.

Available at Beau Photo for \$4700

<https://www.beauphoto.com/product/used-leitz-leica-m6-ttl/>



The Film Counter

Nicole LD.

What's one of your favourite looking cameras?

This is a question I am VERY interested in, because a camera you'd display is often different than one you'd choose as your regular shooter. Like cars, cameras can give one a fresh appreciation for design.

One of the cameras that enticed me is the Rollei Magic, normally I would never have spent \$200 on a camera for simply gazing at, however when I saw the Rollei Magic... I found myself bewitched.

I harassed my co-workers, here are their answers, they all found it hard to mention only one, but just because one is mentioned that doesn't mean there aren't others.



Jason - Leica M6 Titanium with Pre-ASPH 35mm f1.4 Summilux Titanium

Emil - the chonky monster that's the IMAX 17/50

Kathy - ANY box camera, as they are all cute as buttons!

Boris - Bolex H16 RX

Mike - Nikon F3/HP Titanium

Ken - Noblex

Marley - Coca Cola can 35mm

Grace - The green Kodak Beau Brownie

If your looking for a little eye candy yourself Beau does have a few cameras I'd put on my bookshelf IF I had more room:

The Rolleiflex 2.8 Aurum - \$10 000.00

<https://www.beauphoto.com/product/used-rolleiflex-2-8-f-aurum/>

The Universal Stere-all - \$175.00

<https://www.beauphoto.com/product/used-universal-stere-all/>

The Polaroid Land 1000 RAINBOW - \$75

<https://www.beauphoto.com/product/used-polaroid-land-camera-1000-w-q-light-flash/>

Summer Analogue Workshops at Beau



The analogue workshops at Beau return for another summer! We will be doing cyanotype printing, cyanotype toning and pinhole workshops this summer, and there is a possibility that a few others will be added. See the descriptions for each process on our blog - <https://www.beauphoto.com/summer-2024-analogue-workshops/>

Analogue processes are perfect for those who want to work more slowly and create unique images rather than hurry through image making with digital. We still love digital, but there is something special about making things by hand that analogue processes really embrace. The processes we do in the workshops are also rooted in photographic history so we are going really retro with them here! In the workshops, you will learn about the historical uses and see how easy it is to do them on your own. Join us and make images, ask questions, and meet fun people!

Registration for these workshops will open a few weeks before the workshop dates. Plan your summer now and put them in your calendar. Keep an eye on our social media as we will be posting reminders when registration opens.

Cyanotype Workshop

Saturday July 6, 2:15 – 4:15 at Beau Photo

Register on Eventbrite - <https://www.eventbrite.ca/e/cyanotype-workshop-with-beau-photo-tickets-928006431217>

Cyanotype Toning Workshop

Saturday July 20, 2:15 – 4:15 at Beau Photo

Register on Eventbrite - <https://www.eventbrite.ca/e/cyanotype-toning-with-plants-workshop-tickets-928013913597>

Pinhole Camera Workshop

August 17, 2:15 – 4:30 at Beau Photo

Registration opens at the beginning of August - watch social media for info.

Film Thoughts

Boris R.

New Camera Bags For All Your Cameras

Summer is here, and it's time to take your gear on the go. Newsflash! We have the perfect companions for your adventures: the Tenba Skyline v2.7, Axis 24L, and Fulton 16L bags. All available in stock with 15% OFF! These bags will keep your gear secure and accessible during all of your summer escapades. Don't miss this limited-time offer to grab the ultimate photography bags and capture unforgettable moments this season.

Check out more bags online here - <https://www.beauphoto.com/product-category/equipment-products/camera-accessories-bags/bags/>

Tenba Axis v2 24L Backpack SALE: \$339.99
Reg. \$399.99



Tenba Fulton v2 16L All Weather Backpack
SALE \$189.99 Reg. \$219.99



Tenba Skyline v2 7 Shoulder Bag
SALE \$49.99 Reg. \$59.99,

Scanning Services

Get your prints, negatives, and slides scanned so you can share the images with friends and family.



Do you have boxes and albums full of old photographs? We now offer a scanning service brought to you by Photo Expert Scanning. This great new service is a low cost approach that delivers quality images suitable for printing up to 12x18 inch sized prints.



- **All scans are jpg format**
- **Print scans are all 300 DPI. 600 DPI is available on request**
- **35mm scans are 2000 x 3000 pixels.**
- **With a properly exposed, sharp image, scans can easily be printed to 12 x 18 inches.**

www.beauphoto.com/scanning-services

Get 10% off archival products with any scanning order! Ask us for details.

Note: this is not an in-house service and takes approximately two weeks from drop-off to completion.